

1  
.1.1



### Technical Data

For detailed data and product description refer to the data sheets at [www.pepperl-fuchs.com](http://www.pepperl-fuchs.com)

<b>Model Number</b>	<b>NJ25-50-N</b>
Rated operating distance	25 mm
Installation	non-flush
Switching element function	NAMUR, NC
Nominal voltage	8.2 V (R <sub>i</sub> approx. 1 kΩ)
Measuring plate not detected	≥ 3 mA
Measuring plate detected	≤ 1 mA
Switching frequency	0 ... 250 Hz
Ambient temperature	-25 ... 100 °C (-13 ... 212 °F)
Housing material	PBT
Protection degree	IP67
Connection type	cable PVC , 2 m



### Use in the Hazardous Area

Use in the hazardous area	see instruction manuals
Category	2G
Control drawing	116-0165F

### Approvals and Certificates

UL approval	cULus Listed, General Purpose
CSA approval	cCSAus Listed, General Purpose
CCC approval	Products with a maximum operating voltage of ≤36 V do not bear a CCC marking because they do not require approval.

### Dimensions

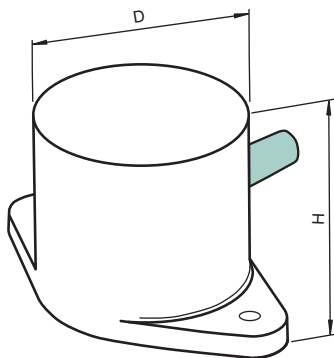
Height H [mm]	40
Diameter D [mm]	50
Thread length l <sub>t</sub> [mm]	0
Connector area l <sub>c</sub> [mm]	0

### Properties

- Ø50 mm housing
- 25 mm non-flush mountable
- DC, NAMUR interface
- Cable version

### Your Benefit

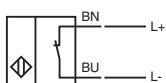
- ATEX approved sensor applicable up to zone 1
- Usable up to SIL2 acc. to IEC 61508



### Electrical Connection



NJ25-50-N



Date of issue: 04/08/2015